

## TEMPLATE MAKING INSTRUCTIONS

The recommended pattern material to use is:

- PE cloth 1000 denier 14x14x200 grams.
- Cardboard,
- MDF board,

The material must retain its shape, be durable and non stretchable.

Pattern material is available from marine textile and shade cloth suppliers or from your distributor.

### Option A

1. Lay pattern material out as smooth and as flat as possible.
2. Where pattern material is joined, double tape to stop movement and cross joins with two lines to use as check marks.
3. Mark out rough size around edges and fittings.
4. Cut out approx size and ensure that all edges are clear of fittings and edges (fig.1).

Fig.1



Fig.2



5. Lay pattern out and tape or pin to deck to ensure there is no movement. (Do not stretch pattern material) (fig.2).
6. With a set size block, mark around edges. **Write on the patterns the size of block that has been used.** It is best to use the same size block as the margin eg, 45mm, 60mm or 75mm (fig.3&4).
7. Cut out the exact size of radius and join (double taped) with your template.
8. Draw size of fittings and **write sizes, number and position on the pattern.** Eg, water filler 102mm.

9. Patterns that are narrow or are over 3 meters in length **must have straight lines drawn down the length of the pattern (use 2 lines if needed)** so that we can re-align the pattern in the factory (fig.7).

Fig.3

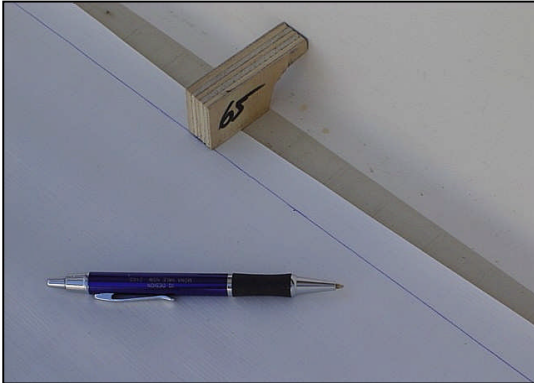


Fig.4



10. Mark where edges are to be bullnosed (fig.5). (Edges can be finished square or rounded on the face edge).
11. **Mark the centre line of the gap in the opening hatches in the deck and give size of gap required**, do not cut out the hatches. We usually make hatch margins oversize by 1.5mm to allow for trimming on the job, eg, engine hatches in cockpit, bait tank hatches, anchor lockers etc.

Fig.5

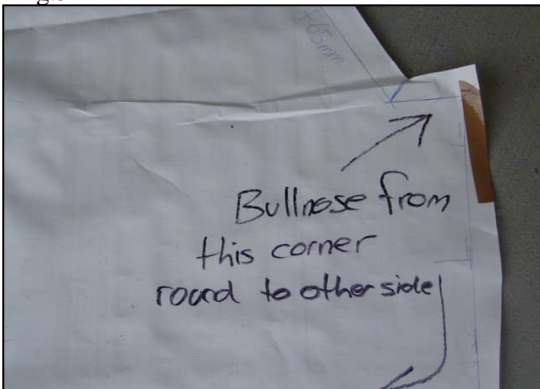
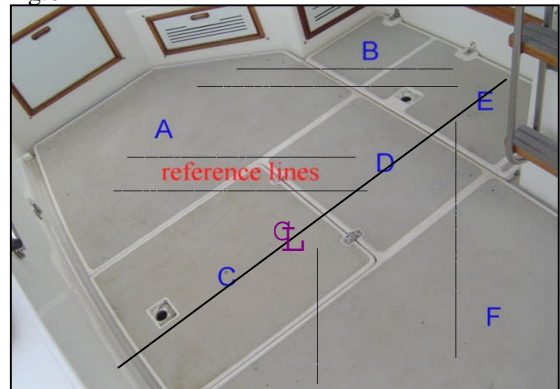


Fig.6



12. **Give reference marks if two or more decks are to line up**, eg, steps, seats, cockpit to boarding platform, steps lining up with cockpit (fig.6)
13. **Give direction of planking required by putting lines on the pattern in the correct direction** (fig.4).
14. If multiple decks are to align, mark each one and draw a simple sketch on one of them. Sketch should include markings, location of decks, position of centre and reference lines and gap measurements if needed (fig.6)

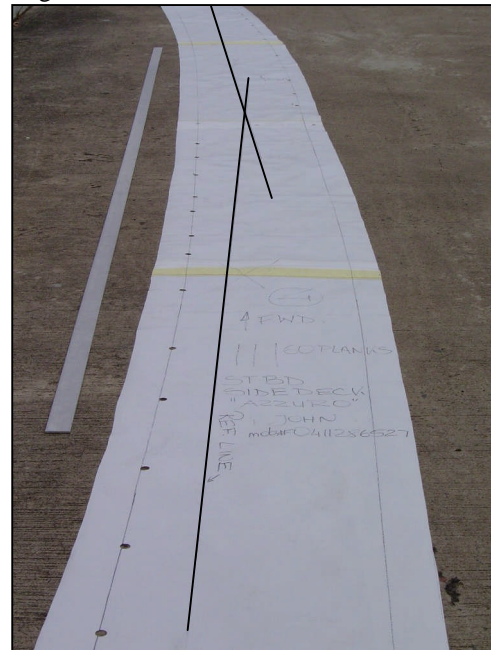
15. Write down the name of boat, your name and telephone number.

**The basis of the pattern is to give us accurate sizes to work to. The more information such as details, marks and reference lines that are written on the patterns, the better the guarantee is of accuracy and quality of your Flexiteek deck. It also allows us to manufacture the deck in a time efficient manner and deliver a complete product to you faster.**

**Option B**

1. Lay oversize template material out over the deck and secure in place with tape.
2. Using a pen, mark the full size shape of the deck, either to the non-skid pattern or to the size you desire.
3. Cut out the template to that line so we have an accurate full-size pattern of the deck.
4. Mark the **centre line, reference lines, plank size and direction, centre gap of hatches** (remember not to cut out the hatches), and any other useful information eg, colour of caulking, size of radiuses and margins, bullnose areas, etc.
5. **Follow points 8 to 15 in option A**

Fig.7



**Take digital photos of the deck area if possible and e-mail them to us. Please do not hesitate to call us. We are looking forward to assist you with any queries you have.**

**Check list:**

- Have you checked the template accuracy, especially around corners, fittings and hatch areas?
- Have you marked the planks direction?
- Have you marked reference lines between decks?
- Have you marked a straight line on long and narrow patterns?
- Have you written down your name and contact details?



If you answered yes and are satisfied with your effort, roll it up and send it to us, we will do the rest.

We are continuously updating our pattern making instructions so any feedback you can give us will be greatly appreciated.

**We look forward to building your new Flexiteek deck.**